

Application:

External horizontal fire barriers to restrict vertical fire spread from other firecells within the same building as determined by section 4.1.1 and 4.1.2 in approved document C3 of the N.Z.B.C.

Technical Detail:

1.0 Soffit lining

FRR	Product
30/30/30	Promina 9.0mm
60/60/60	Promina 9.0mm

2.0 Insulation

FRR	Product
30/30/30	Not required
60/60/60	Etercore 30mm thick

3.0 Framing layout

Soffit width	Dimension A
600	1200
750	900
1200	600

4.0 Fixings

FRR	Product
30/30/30	40x2.8 Clouts
60/60/60	No.6x30 Surefast screws

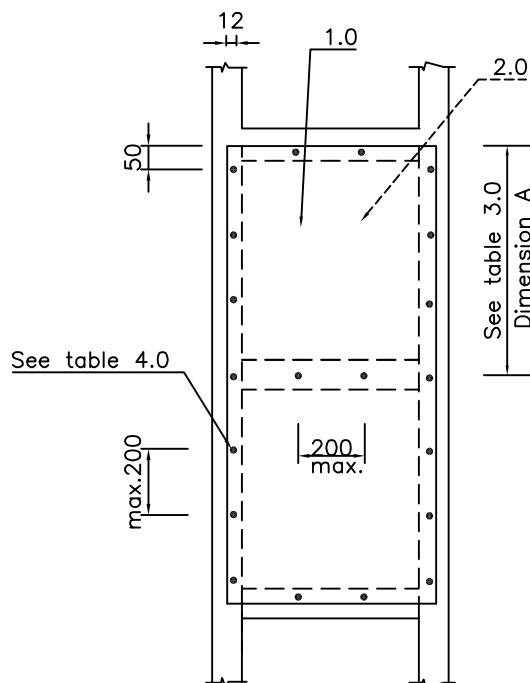
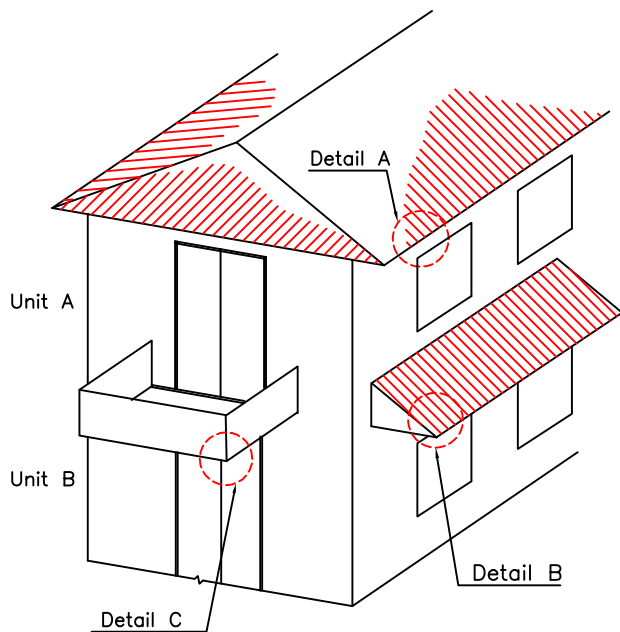
5.0 Promaseal intumescent mastic

6.0 Cantilevered bracket.

7.0 M10x65 Coach Screws

8.0 Flashing and weathering to architects design.

Note 1.0 Promina and Promatect boards are autoclaved calcium silicate boards unaffected by moisture and humidity. For external use both faces and all edges must be sealed with an alkali resistant sealer.



Detail For: Framing layout for 600,750 and 1200 wide soffits/aprons