

Your partner in building solutions

**pbs** distributors

**pbs**  
**eterpan** siding

## INSTALLATION GUIDE



**pbs** distributors

© PBS Distributors. The content of these instructions remain the property of PBS Distributors and must not be altered, used or any other publication without the written permission of PBS Distributors.

TE-SY-WE-Install 111207

## General remarks on Eterpan siding with Eterside.

- This installation guide is to be used in conjunction with:
  - PBS Eterpan Siding QA Sheet
  - PBS Eterpan Siding specifications
  - PBS Eterpan Siding Order List
  - Architects' specific details
  - PBS Corporate Folder
  - PBS Eterpan Base as Rigid Air Barrier Installation Guide and details
  - PBS Eterpan Bracing Manual
  
- The methods selected for this guide are based on experience from sites & have proven to give the best results. The sequence of the work steps as well as their implementation may vary more or less due to different building situations.
  
- Further details are available in the PBS folder or from the website

[www.pbs.co.nz](http://www.pbs.co.nz)

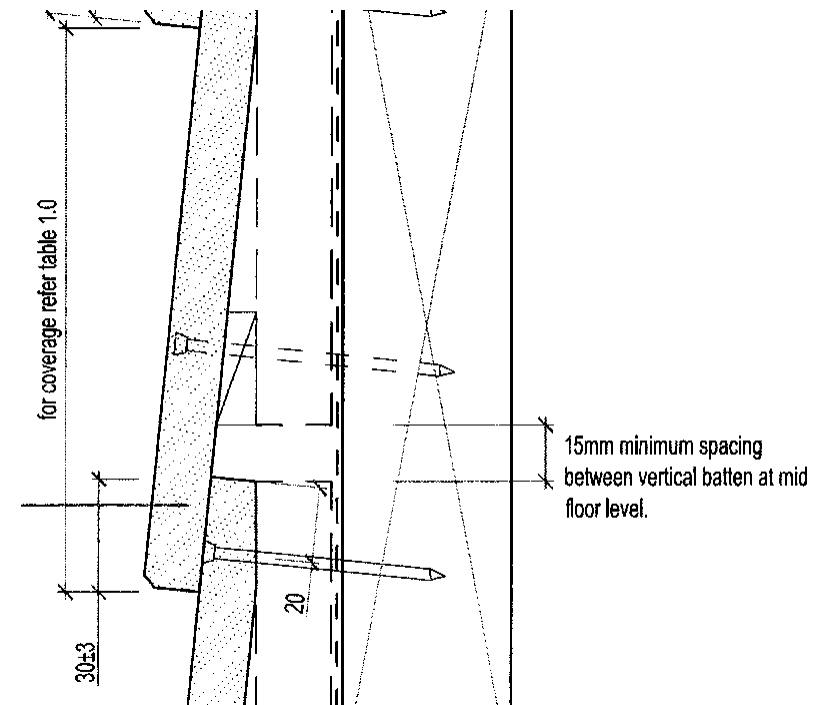
## Step 1: Air Barrier Options

- Building wrap may be used as a non rigid air barrier where the ULS is less than  $\pm 1550$  Pa.
- Where wind pressures exceed  $\pm 1550$  Pa and are less than  $\pm 2700$  Pa use a rigid air seal of **Eterpan Base**.
- For more information on Rigid Air Barriers please see the **Eterpan Base as Rigid Air Barrier** installation manual

**NOTE:** there is no need for a building wrap with a rigid air barrier although this can be done if required. For more information contact PBS

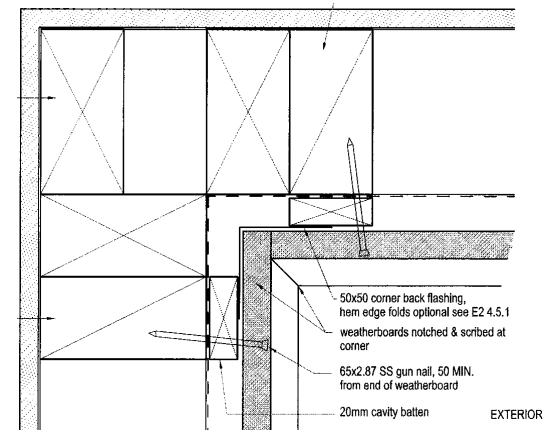
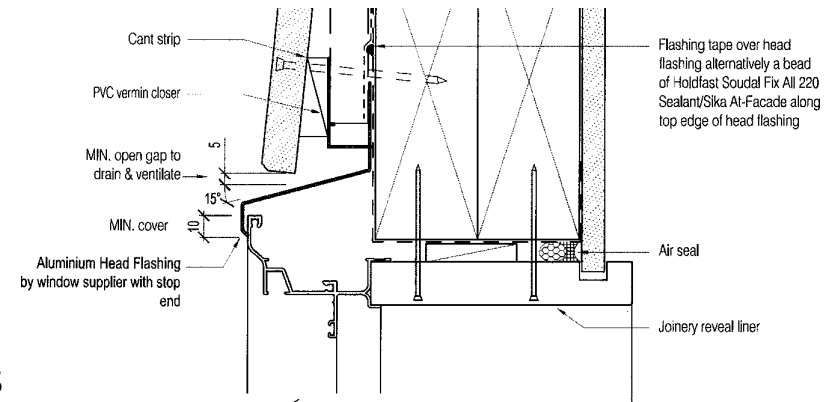
## Step 2: Vertical battens

- ❑ Prior to cavity installations **ensure** the following items are addressed;
  - ❑ Joinery support is fitted as required by the proprietary window system.
  - ❑ Datum of window head heights are consistent and level.
  - ❑ Flashings are installed with flashing taped lapped over up stand. Check stop ended & sealed correctly.
  
- ❑ Structurally fix timber cavity battens @ 600ctrs. Fixing with 65mm S/S gun nails @ 300mm centers staggered either side of batten centre line.
  
- ❑ Fix vertical battens flush with bottom plate.  
**Note; battens to have break when spanning joists at mid floor refer WE.9.3.03**



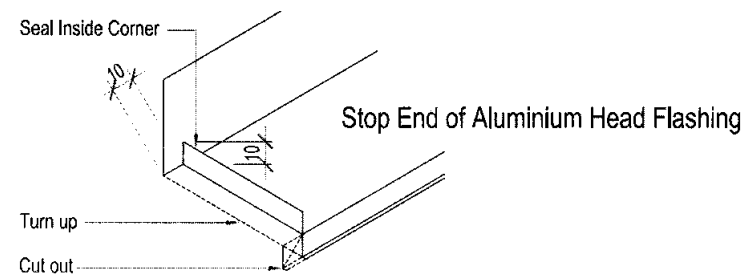
## Step 3: Vertical battens continued.

- ❑ Fit vertical battens above openings finishing over and onto the head flashings. **Note; Best practice to notch battens over flashing to eliminate bulking.**
- ❑ Fix **double batten** at external/internal corners and at all jambs for openings as required.
- ❑ Install **PVC vermin flashing** and **cant strip** to base of cavity and over window openings.
- ❑ Install 50 x 50 internal corner back flashings onto vertical battens. Tak in place with clouts. Ensure **duct tape** separation is present between batten & flashings.



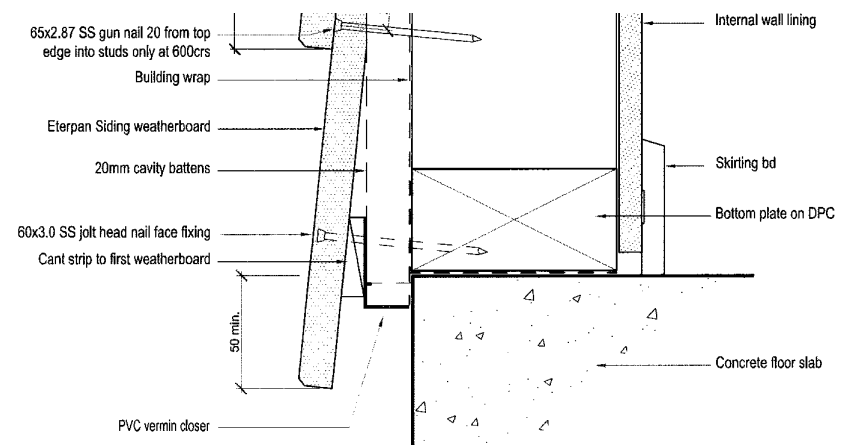
## Step 4: Pre Cladding Checks

- Prior to cladding ensure the meter box flashing kit is installed if required. Refer **WB.9.3.07**
- Ensure all pipe and penetrations have been sealed to PBS detail . Refer **VP.2.8.01**
- Check for tears in building wrap air seal and repair as required.
- Check that all flashing have flashing tape lapped over the up stands and stop ended as required.



## Step 5: Weatherboard Cladding

- ❑ Commence weatherboard cladding from the bottom or first board. You would have checked the set out is correct and that you finish with your desired proportion sized board beneath the window sill or at the soffit termination. **A storey rod/jig is recommended to keep all laps or cover consistent.**
- ❑ Fix Eterpan Sidings boards 20mm down from top edge with 65mm SS nails @ max. 600 ctrs.
- ❑ Eterpan sidings boards to over sail bottom plate by 50mm
- ❑ Maintain ground clearances;  
35mm clear of finished deck surface.  
100mm clear of paved surfaces or  
175mm clear of unpaved surfaces.



## Step 6: Weatherboard cladding

- ❑ Join Eterpan siding boards with a PVC joiner and continuous bead of Bostik SAFESEAL sealant to exterior side of T & G joint.
- ❑ Now fit Eterpan siding external corner soakers before face nailing commences.
- ❑ Pre-drill and face nail Eterpan siding boards with 60x3.0mm SS jolt head nails at board ends and @ 1200 ctrs as necessary and punch ready for paint.
- ❑ Fit facings and scribes to specific detail.
- ❑ Stop all punched holes, clean down and sand as required ready for selected paint system.

