

Your partner in building solutions

**pbs** distributors

## INSTALLATION GUIDE for Rigid Air Barrier

**pbs**  
**eterpan** base



**pbs** distributors

© PBS Distributors. The content of these instructions remain the property of PBS Distributors and must not be altered, used or any other publication without the written permission of PBS Distributors.

TE-SY-RA-Install 110920

## General remarks

- ❑ The **Eterpan Base** as Rigid Air Barrier is to be used when the ULS wind pressures exceed 1550 Pa but do not exceed 4050 Pa. The Eterpan BASE as Rigid Air Barrier can be used in lieu of building wrap.

Max wind pressure (Pa)	Eterpan thickness (mm)	Framing Centres (mm)
Up to 2,700	4.5 – 6.0 – 7.5 – 9.0	Studs @ 600mm
Up to 3,700	6.0 – 7.5 – 9.0	Studs @ 600mm
Up to 3,900	9.0	Studs @ 600mm

- ❑ The methods selected for this guide are based on experience from sites & have proven to give the best results.
- ❑ Further details are available in the PBS folder or from the website [www.pbs.co.nz](http://www.pbs.co.nz)

## Preliminary checks

- Check waterproofing membranes are in place and are recessed into the framing if necessary to avoid baulking of the rigid air barrier when installed.
- Stop ends have been formed at flashing terminations to prevent any water from entering the cavity.
- Complete frame check and sign off QA Check sheet to ensure compliance.
- Ensure Eterpan Base as Rigid Air Barrier is stored on a flat surface, covered and kept dry.

## Products

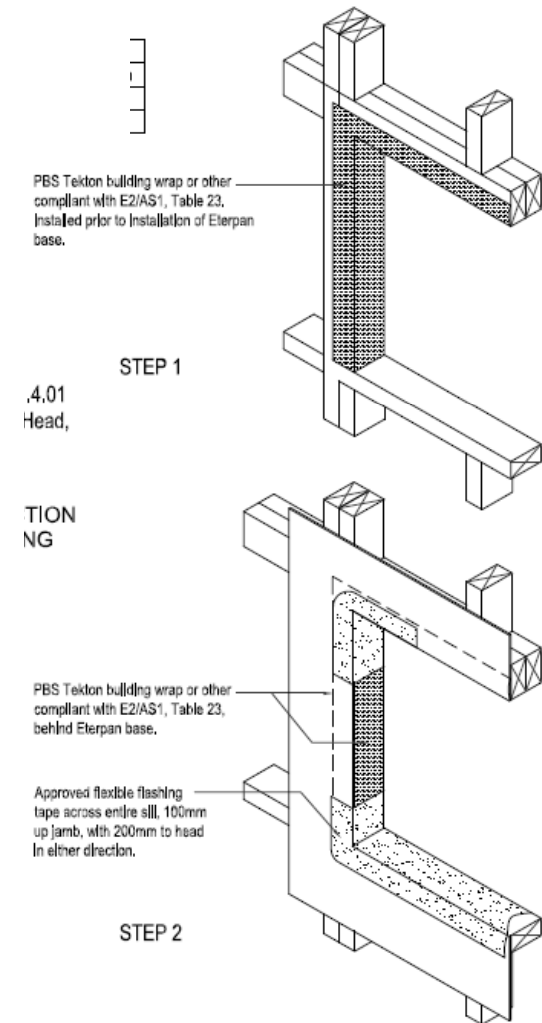
- Eterpan Base 4.5 – 6.0 - 7.5 – 9.0 mm.**
  - Eterpan Base SEALED 4.5 – 6.0 – 7.5 – 9.0mm**
  - Available sizes 2400 – 2700 – 3000 x 1200 mm
  
- 40mm S/S or galvanized clouts, available in 5 kg packs. Note S/S required for fire rating and bracing elements.
  
- Bostik SAFESEAL sealant, available in 330 ml or or 600 ml sausages
  
- Choose between PROTECTO tape or BUTYLSEAL tape
  - Protecto Sill tape 150 or 300 mm wide for window sills, jambs, head.
  - Protecto Detail tape 150 mm wide for corners of windows
  - Protecto VOC 80 primer for adhesion of tape on fibre cement
  - Protecto Tak spray for adhesion of tape on building wrap
  - Protecto Tape 75mm wide for taping sheet joints
  - Butylseal tape 80mm wide for taping sheet joints
  - Butylseal tape 150 mm wide for taping window silld,jambs, head.
  - Butyl tape primer in 1 or 4 liters containers

## Step 1: Window Detail Options - Rigid air barrier

Ignore this step when the specifications call for Building Wrap instead of a Rigid Air Barrier

There are 2 options for the detail at window and door openings: **Option 1**

- Wrap window and door jambs and head with building wrap before fitting **Eterpan Base** as Rigid Air Barrier.
- Fix Eterpan Base as Rigid Air Barrier with 40mm stainless steel clouts at 150 centres to all nogs & studs
- Edge distance minimum 12.0mm
- Corner distances minimum 100mm & 50mm
- Prime contact area of Eterpan Base as Rigid Air Barrier before fitting tape
- Tape the 4 corners and sill of each opening with Protecto Detail & Sill tapes.

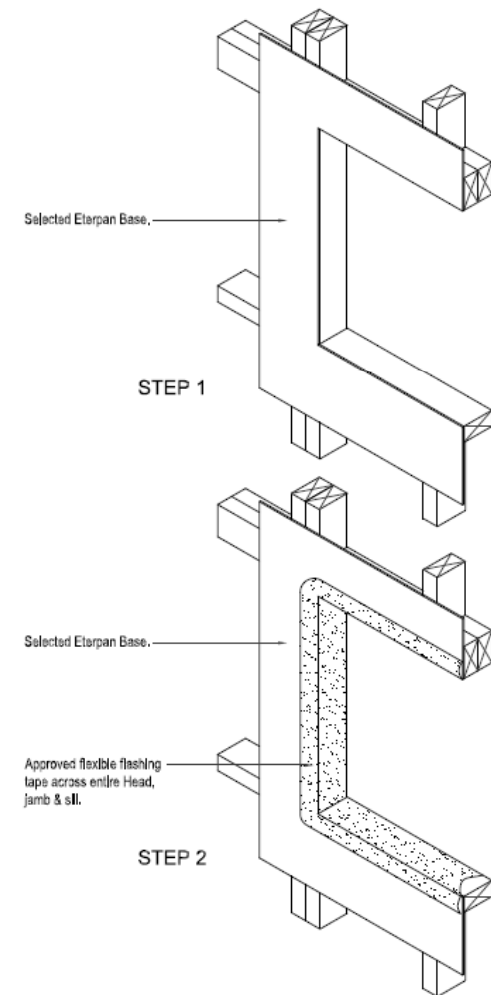


## Step 1: Window Detail Options - Rigid air barrier (continued)

Ignore this step when the specifications call for Building Wrap instead of a Rigid Air Barrier

There are 2 options for the detail at window and door openings: **Option 2**

- Fix **Eterpan Base** as Rigid Air Barrier with 40mm stainless steel clouts at 150 centres to all nogs & studs
- Edge fixing distance minimum 12.0mm
- Corner fixing distances minimum 100mm & 50mm
- Prime contact area of Eterpan Base as Rigid Air Barrier before fitting tape
- Tape the 4 corners with Protecto detail tape and then tape the perimeter of the opening with Protecto Tape.



## Step 2: Joint option

Determine the joint seal option

- Express** all sheet joints including internal and external corners a nail width (3.0 mm minimum) and seal with Bostik SAFESEAL sealant on completion.

See detail **RA.11.1.01**

**OR**

- Butt** all sheet joints including internal and external corners, seal to 100 mm wide with butyl primer / Protecto Primer and tape joints with 80 mm wide PBS Butyl tape or 75mm Protecto tape.

See detail **RA.11.1.02**

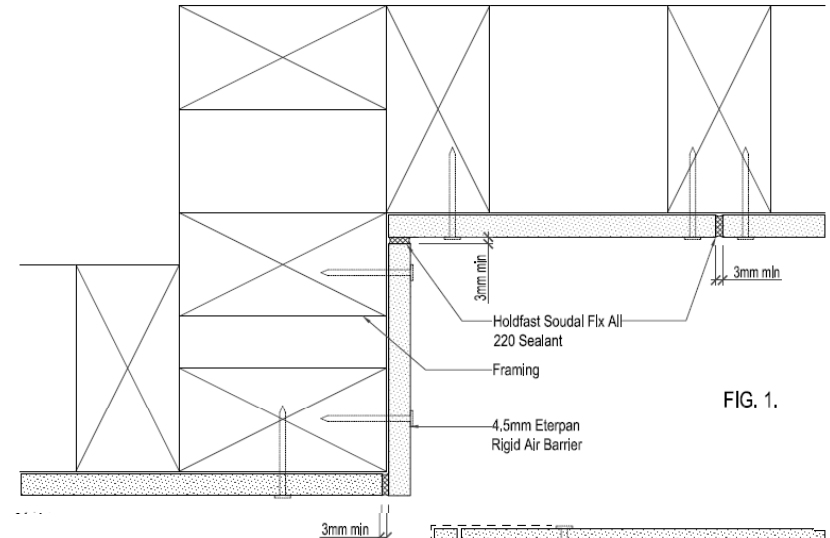


FIG. 1.

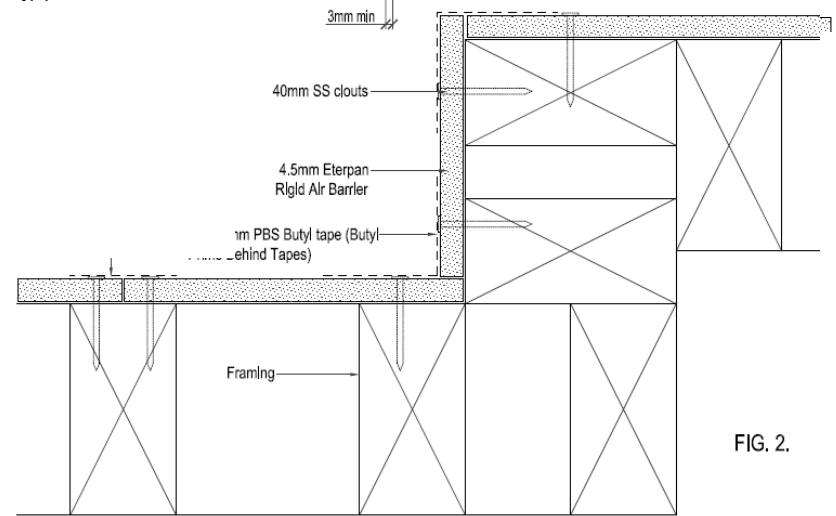


FIG. 2.

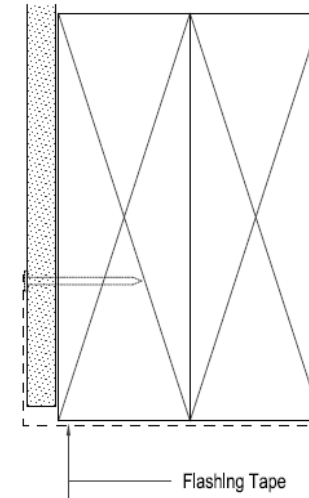
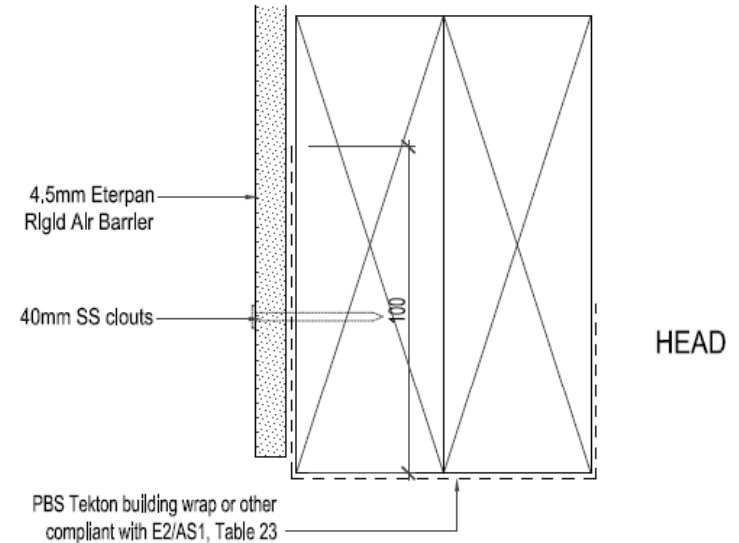
## Step 3: Jamb seal option

Determine the jamb seal option

- 1) Cover jamb framing and upper side of lintel to 100 mm behind sheet with approved **building wrap**. Finish the sheet edges 3.0 mm back from the framed opening at the jambs, head and sill. Tape sill and extend 100 mm minimum up jamb with approved flashing tape. Tape the upper corners similarly 100 mm extended over head and jamb. See detail **RA.11.4.01**

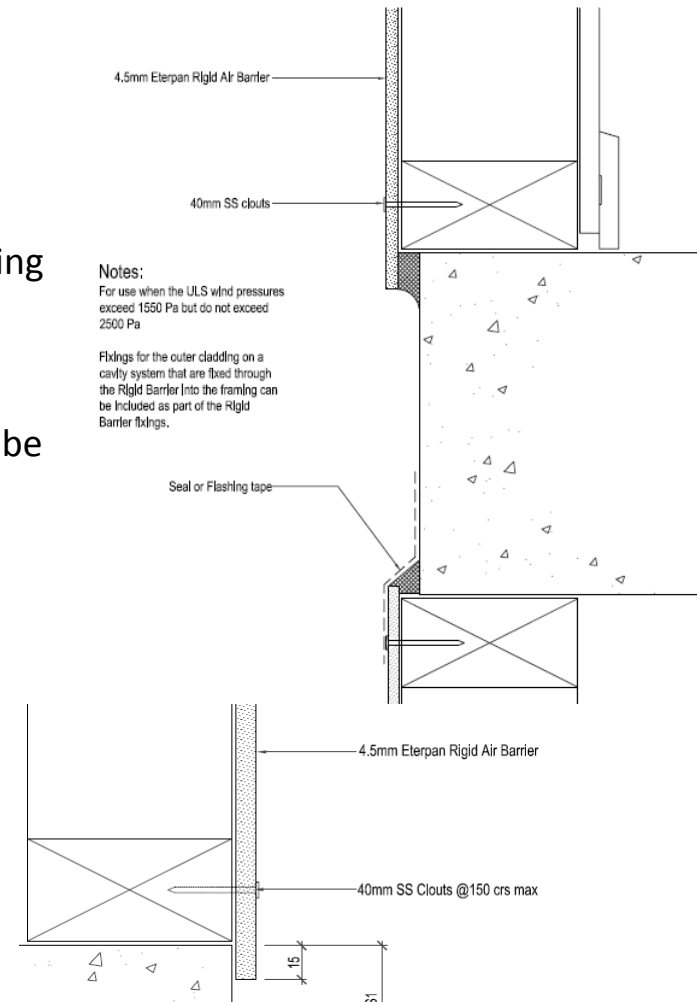
**OR**

- 1) Finish the sheet edges 3.0 mm back from the framed opening. Tape head, sill and jambs with approved Butyl tape or Protecto tape. See detail **RA.11.4.01**



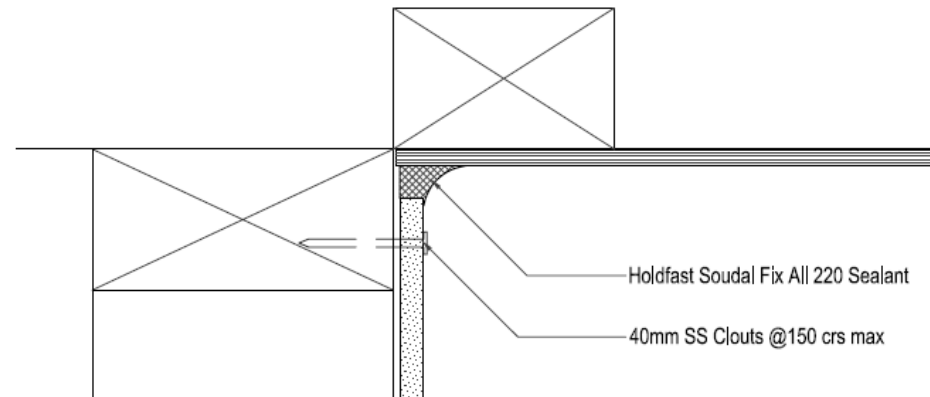
## Step 4: Fixing Eterpan Base

- ❑ Fix sheets with full perimeter support to all edges, using 40 mm stainless steel or galvanized clouts (stainless steel is required if Rigid Air Barrier is designed to have bracing resistance)
- ❑ Corner fixing distances minimum 100mm & 50mm, edge fixing distance 12.0mm min.
- ❑ Clouts must not be driven through the material, clouts must be set 0.5mm max. above fibre cement surface and finish hard against the sheet.
- ❑ Do not span any mid floor joists with full sheets !  
See detail **RA.11.3.06** and **RA.11.3.07**
- ❑ Sheets to be fixed 15 mm below bottom plate.  
Refer detail **RA.11.3.02**



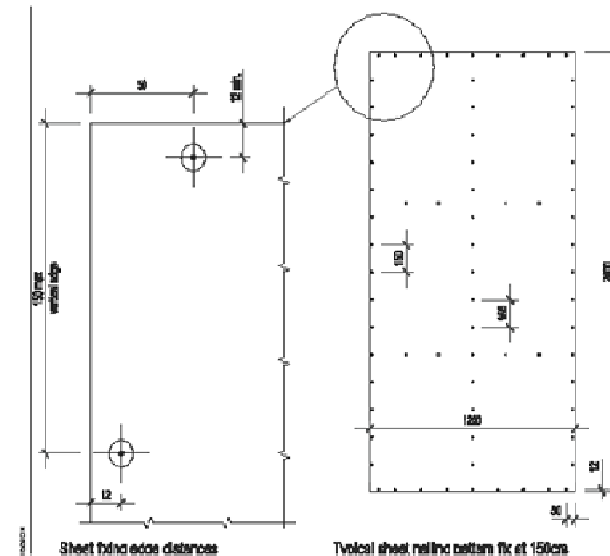
## Step 5 : Fixing Eterpan Base - continued

- ❑ Sheet joints can be made down the side of an opening or sharing a 45.0 mm stud or nogg.
- ❑ At tops of sheet intersecting with soffit linings leave a minimum 3.0 mm seal gap and seal with Bostik SAFESEAL



## Step 5: Fixing Eterpan Base – continued 2

- ❑ Window head flashings are to be face fixed and sealed or taped to the rigid air barrier.
- ❑ Sheets to be clout fixed with 40 mm SS clouts at 150 mm centers to sheet perimeter and intermediate framing. Fixings for outer claddings on a cavity system that are fixed through the rigid air barrier into the framing can be included as part of the sheet fixings.
- ❑ Corner fixing distances minimum 100mm & 50mm
- ❑ Edge fixing distance minimum 12.0mm



## Step 6: Completion check

- Rigid air barriers need to achieve an air tight seal around the framing structure. Check that all perimeters of each wall section, all joints are sealed. All penetrations are to be installed prior to the outer cladding and taped or sealed to the Eterpna Base Rigid Air Barrier and left air tight.
- Complete QA check sheet to ensure compliance

